

RCF Photographs

February 1, 2012



Consolidated Rental Car Facility
February 1, 2012



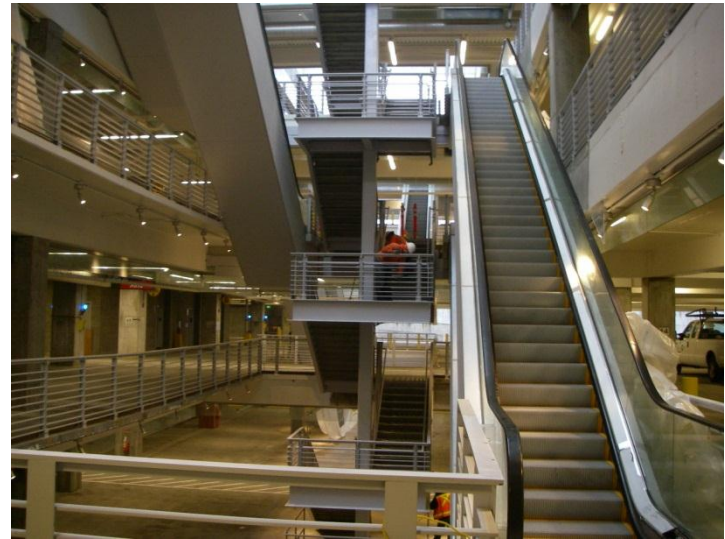
Consolidated Rental Car Facility
December 31, 2011

December 31, 2011

Rental Car Facility



RCF Bridge 4 Approach Sign

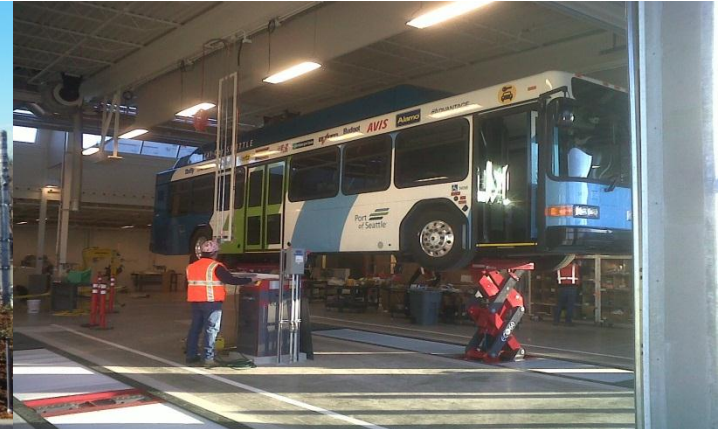


RCF Stair K and Escalator Core

Bus Maintenance Facility



Site at start of construction



Bus Maintenance Building



CNG Fueling Facility



Bus Wash Facility

Main Terminal Wayfinding



Start of construction



Sidewalk and Shuttle Stop Improvements

Off Site Road Improvements



Emergency Vehicle Entrance to
RCF at International Blvd.



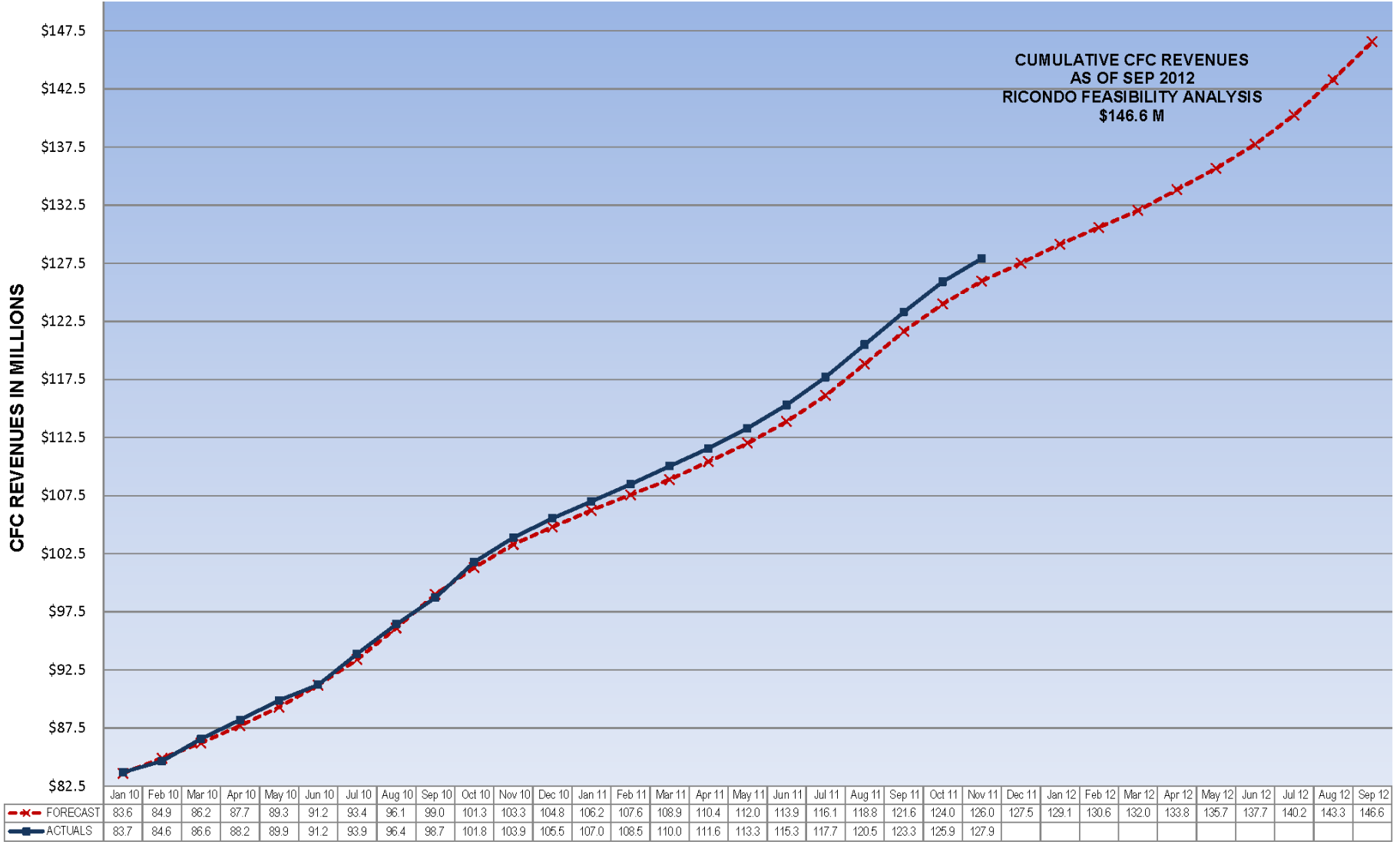
Pouring sidewalk at So. 160th St Bridge



Consolidated Rental Car Facility Program Costs as of 2/10/2012

Project	6/30/09 Budget	3/29/11 Authorization	Approved Transfers/Trends	Pending Transfers/Trends	Remaining Contingency	Expended to Date	Forecast to complete
RCF	\$350,772,000	\$350,772,000	\$21,386,824	\$19,456,857	(\$5,122,450)	\$321,001,442	\$337,678,256
BMF	\$28,282,000	\$28,282,000	(\$1,766,712)	\$279,278	\$1,198,434	\$19,183,661	\$24,890,000
ORI	\$19,542,000	\$19,542,000	(\$766,978)	\$555,501	\$1,375,479	\$15,203,587	\$18,775,000
MTI	\$3,383,000	\$3,383,000	(\$581,393)	\$13,200	\$81,193	\$1,193,927	\$1,883,006
Buses	\$17,327,000	\$16,000,000	(\$4,911,269)	\$0	\$219,897	\$12,254,512	\$12,292,112
Unallocated Contingency	\$0	\$0	\$22,460,626	\$0	\$22,460,626	\$0	\$0
Total	\$419,306,000	\$417,979,000	\$35,821,098	\$20,304,836	\$20,213,179	\$368,837,129	\$395,518,374

**SEATTLE-TACOMA INTERNATIONAL AIRPORT
CFC REVENUE FORECAST TO ACTUAL COMPARISON
NOV YTD 2011**



Notes:
The forecast is from the Ricondo Feasibility Analysis which was the basis for the RCF bond issuance
No interest proceeds are reflected in actuals shown above